

DVB-S2

TELECO



GB



**Installation and
operation manual**

FLATSAT ELEGANCE S M A R T 50
FLATSAT ELEGANCE S M A R T 65
FLATSAT ELEGANCE S M A R T 85

TELECO WARRANTY

Teleco guarantees its satellite dishes and terrestrial antennas against any material and/or construction fault and defect. The warranty offered by TELECO is limited to the free-of-charge replacement or repairing of any parts that are deemed faulty by TELECO. The warranty is applicable for a period of 3 YEARS starting from the product purchase date; however, it will only be considered valid if the Customer is able to produce a written document (invoice or tax receipt) showing the purchase date.

The following is excluded from the TELECO warranty:

- a. Damages caused by incorrect installation and/or use and/or maintenance
- b. Damages resulting from product alterations not authorised by Teleco
- c. Damages resulting from the use of spare parts different from original Teleco parts
- d. Damages resulting from repairs carried out by personnel not authorised by Teleco
- e. Normal part wear;
- f. Expenses incurred for spare parts transport between the Customer's and the service centre
- g. Damages that may occur during transport:
the Customer shall always be responsible for transport risks.

Information

Congratulations on your purchase! Flat Sat Elegance Smart is among the most technologically advanced products in the field of satellite TV reception. This handbook has been prepared to provide information on how to install, use, maintain and technical specifications your Flat Sat Elegance Smart.

For additional information, please contact your local dealer or directly the manufacturers:

TELECO s.p.a.


Via E. Majorana 49
48022 LUGO (RA)

Web site: www.telecogroup.com

Technical attendance: 899.899.856

TELECO .p.a. declines all responsibility for any errors contained in this manual. All the contained information are up to the dates of printing and of the above-mentioned software revisions. TELECO .p.a. reserves the right to introduce any modification made necessary by the development of its products.

TABLE OF CONTENTS	Page
Information	1
List of accessories	3
Installation of dish on motor unit.....	4
Assembly instructions	5
Control Unit Installation.....	8
Flat Sat Elegance Smart – Front view.....	9
Flat Sat Elegance Smart – Rear view.....	9
Connecting the Kit with Teleco TV TY2	11
LNB rotation for ideal signal reception in extreme	12
Tips on the best use of Flat Sat Elegance Smart	14
Operating the Kit with Control Unit and TELECO TV TY2	16
Fault display	19
Troubleshooting	21
Technical specifications	22
Spare parts tables	23
Installed Kit	30



Recycling: with a view to reducing disposal of waste electrical and electronic equipment as much as possible, do not throw out this end of life appliance together with other unsorted municipal waste, but make use of a recycling centre.

List of accessories

Flat Sat Elegance Smart is delivered inside a cardboard case that has been specially made to protect it from knocks and pressure. The following accessories are supplied:

- 1 External motor-driven unit
- 2 50-65-85 cm dish
- 3 Universal LNB
- 4 Control Unit
- 6 Motor connecting cable extension
- 7 Coaxial cable extension for antenna signal
- 8 Power Supply Cable
- 10 Waterproof box to pass leads through
- 11 Heat-shrinking sheaths
- 12 Roof attachment plate
- 13 No. 4 Locknuts M6
- 14 No. 4 Screws and Locknuts
- 15 User's manual and installation manual
- 16 Jack-Jack lead 2.0 m
- 17 RCA-Mini AV cable, 2.0 m long





Important notice

Flat Sat Elegance Smart is packaged in two separate cartons for transport reasons:

- a) the first package contains the driving unit with all the cables, and the control box.
- b) the second package only contains the dish.

- It is important to check that the dish has not been damaged during transport when the package is opened. In particular, check the following well:

- By resting the dish edge against a flat surface (e.g. the floor or a wall) check that it makes contact to the surface all around. If it is not so, try and make the edge level, without denting the dish, or call our After-Sales Service.

YES



NO



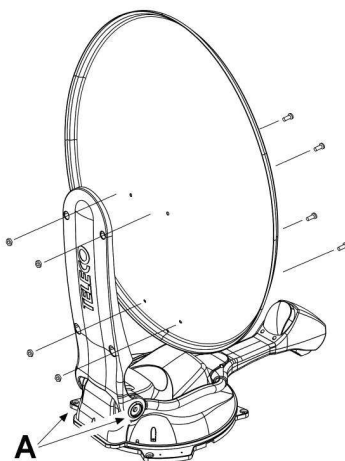
- After checking that everything is in order, install the dish on the driving unit as follows:

- 1) Connect the Control Unit and the TV as described on page 11 "Connections"
- 2) Press the AUTO key of the TV remote control and wait (about 30 seconds) for the dish support arm to lift up.
- 3) Once you have reached the desired position, disconnect the power supply cable to switch off the Flat Sat Elegance Smart.
- 4) Secure the dish to the mast and screw down the four supplied screws.
- 5) Turn the unit on again and wait for the antenna to close.
- 6) **Disconnect the Control Unit, the battery and install the driving unit on the vehicle.**



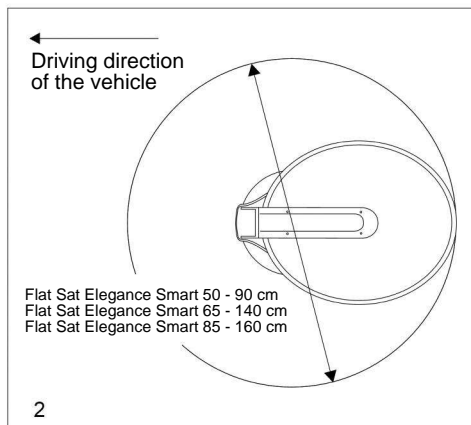
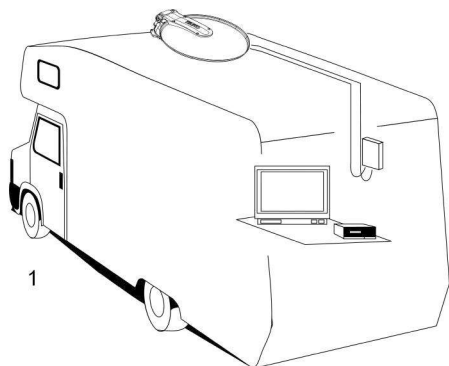
Warning:

NEVER loosen the two dish arm lock screws (A) to attach the dish as this will result in loss of alignment with the antenna.

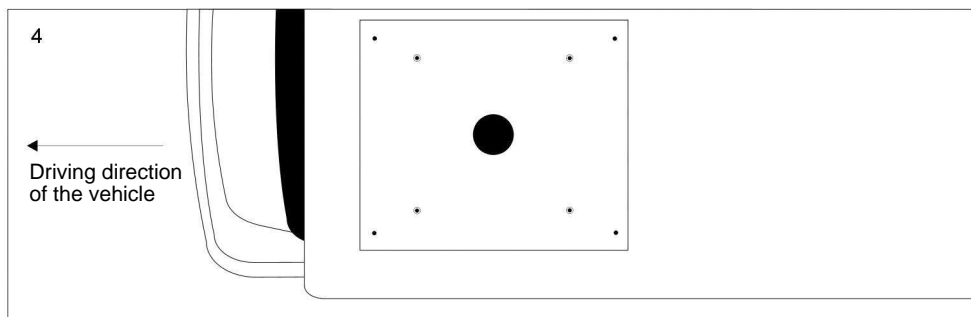
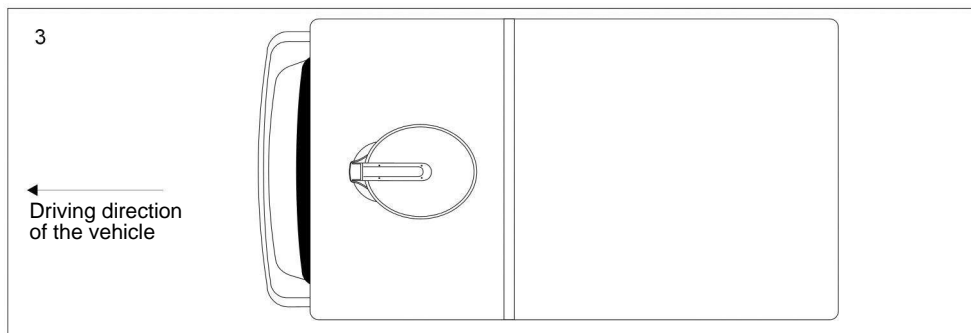


Assembly instructions

- 1) On the roof of the vehicle, choose a free area large enough to allow the antenna to revolve (Fig. 2).

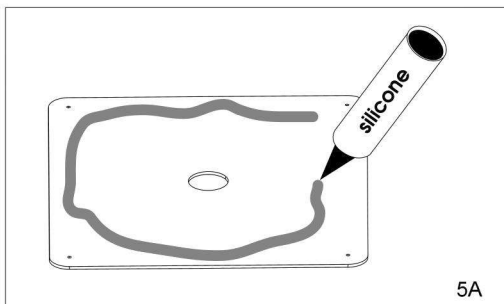
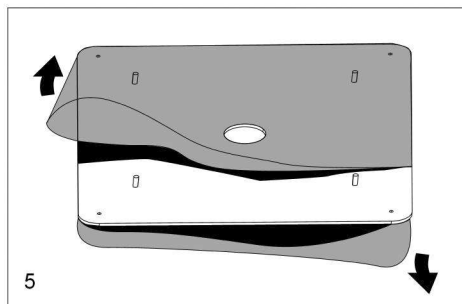


- 2) Clean the roof carefully in the area the OUTSIDE UNIT is to be installed in.
- 3) Remembering that the OUTSIDE UNIT must be fastened as shown on Fig. 3, position the base plate as shown on Fig. 4, with the short side towards the driving direction of the vehicle.



When they are present, remove the transparent films from the BASE PLATE (Fig. 5).

- 4) Clean the lower part of the BASE PLATE carefully, applying a layer of glue on the whole surface (e.g. SIKAFLEX).

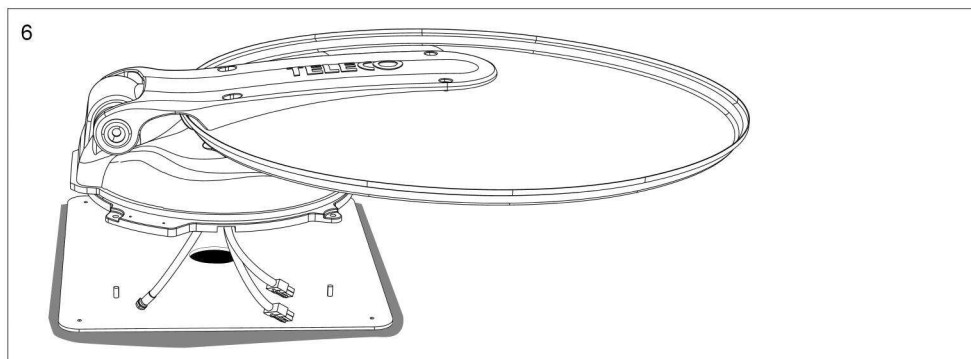


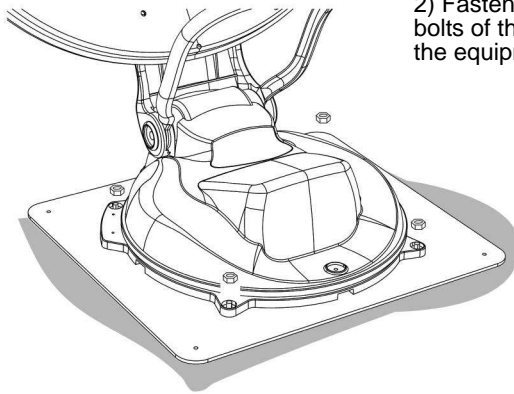
- 5) Fasten the BASE PLATE to the roof (short side towards the vehicle driving direction).
- 6) Apply a layer of silicone all around the BASE PLATE in order to make it completely waterproof (Fig. 5A)

Outside Unit Installation

- 1) Fasten the OUTSIDE UNIT on the base plate and lead the two cables through any of the 4 existing grooves, according to the position as shown on Fig. 6.

WARNING: When performing this operation, do not draw the two cables forcefully, as this might pull them out.





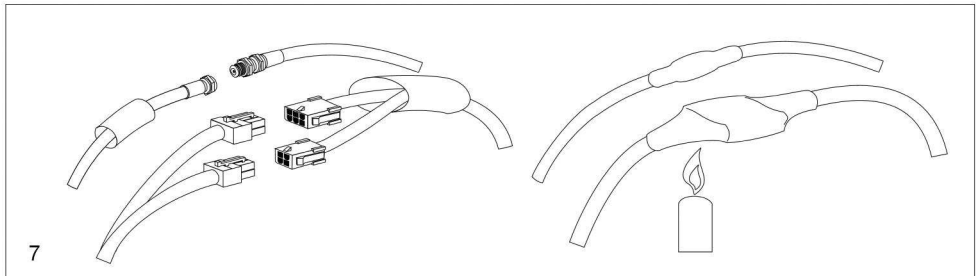
- 2) Fasten the external powered unit to the four stud bolts of the plate, using the four nuts supplied with the equipment.

⚠ Caution:
to ensure ideal nut tightening and prevent possible pin breaks, tighten the nut with a torque wrench set to 8 Newtons/metre

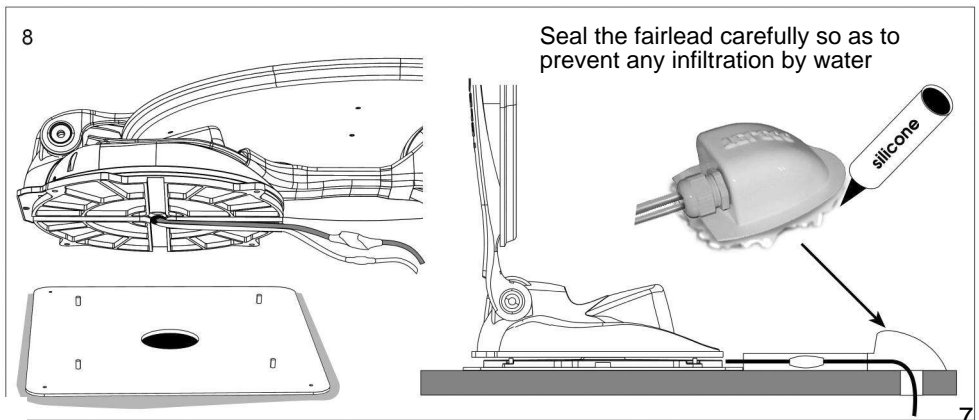
Connection with extension

WARNING The Grey and Black cables coming out of the Outside Unit are generally long enough to allow for connection to the Control Unit. If it is not so, use the extension cables and perform the following operations:

- 1) Connect the two cables coming from the centre of the OUTSIDE UNIT to the two supplied extensions, waterproofing the connectors using the two pieces of heat-shrinking tube.



- 2) Accomodate the cables into a protection raceway up to the point where the cables go into the vehicle, using the suitable supplied fairlead.



Control Unit Installation

- 1) Position the Control Unit in an easy accessible, ventilated compartment.

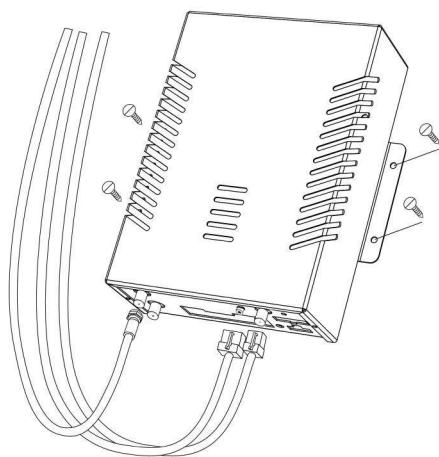
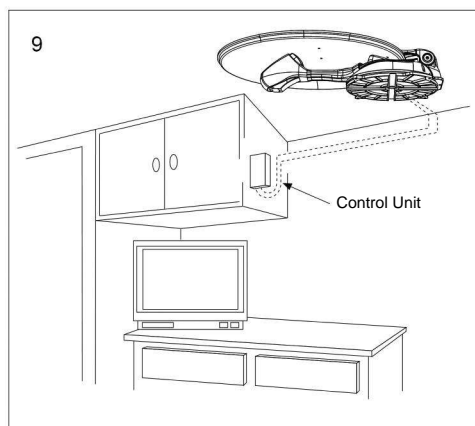


WARNING:

Do not install the Control Unit in areas where liquids can be spilled, since this could cause irreparable damage.

Do not install the Control Unit in very small, unventilated compartments, since overheating could compromise its functionality and render the warranty null and void.

- 2) Place the control board comando in an easily accessible, visible position.
- 3) Install the connection cables (Grey and Black) until you reach the OUTSIDE UNIT installation area.



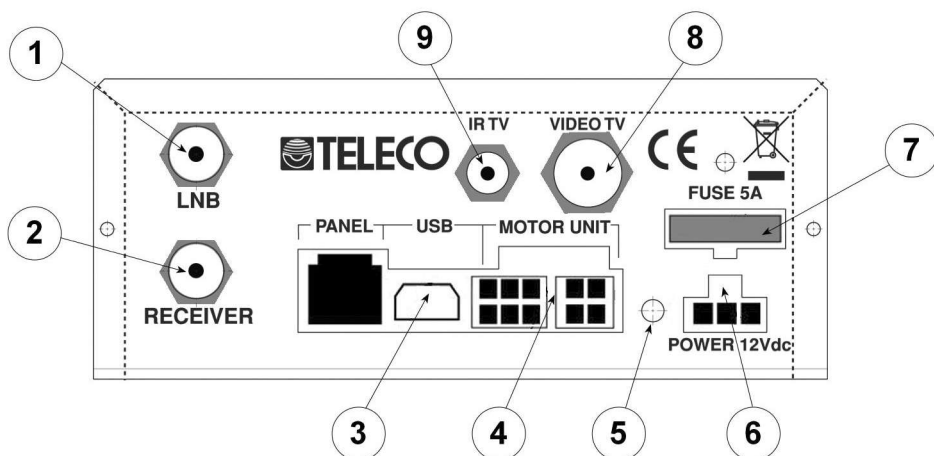
Note: Install the wall-mounted control unit with the (Grey and Black) connection cables bent as shown in the picture. This installation tip will prevent any condensation water from flowing down the cables into your control unit electronics - damaging it beyond repair and voiding your warranty.

Flat Sat Elegance Smart – Control Unit front View



1) Power-on indication LED

Flat Sat Elegance Smart – Control Unit rear View



- 1) F type connector – input from LNB converter of the driving unit
- 2) F type connector – signal output to be connected to any satellite receiver
- 3) B type USB connector – connection to a PC for updating purpose
- 4) Connector for connection to the driving unit
- 5) Diagnostics button (for technical staff only)
- 6) Connector for power supply input from battery and safety cable
- 7) 5 A blade fuse
- 8) RCA Video connector – TV output
- 9) Jack Connector - IR TV

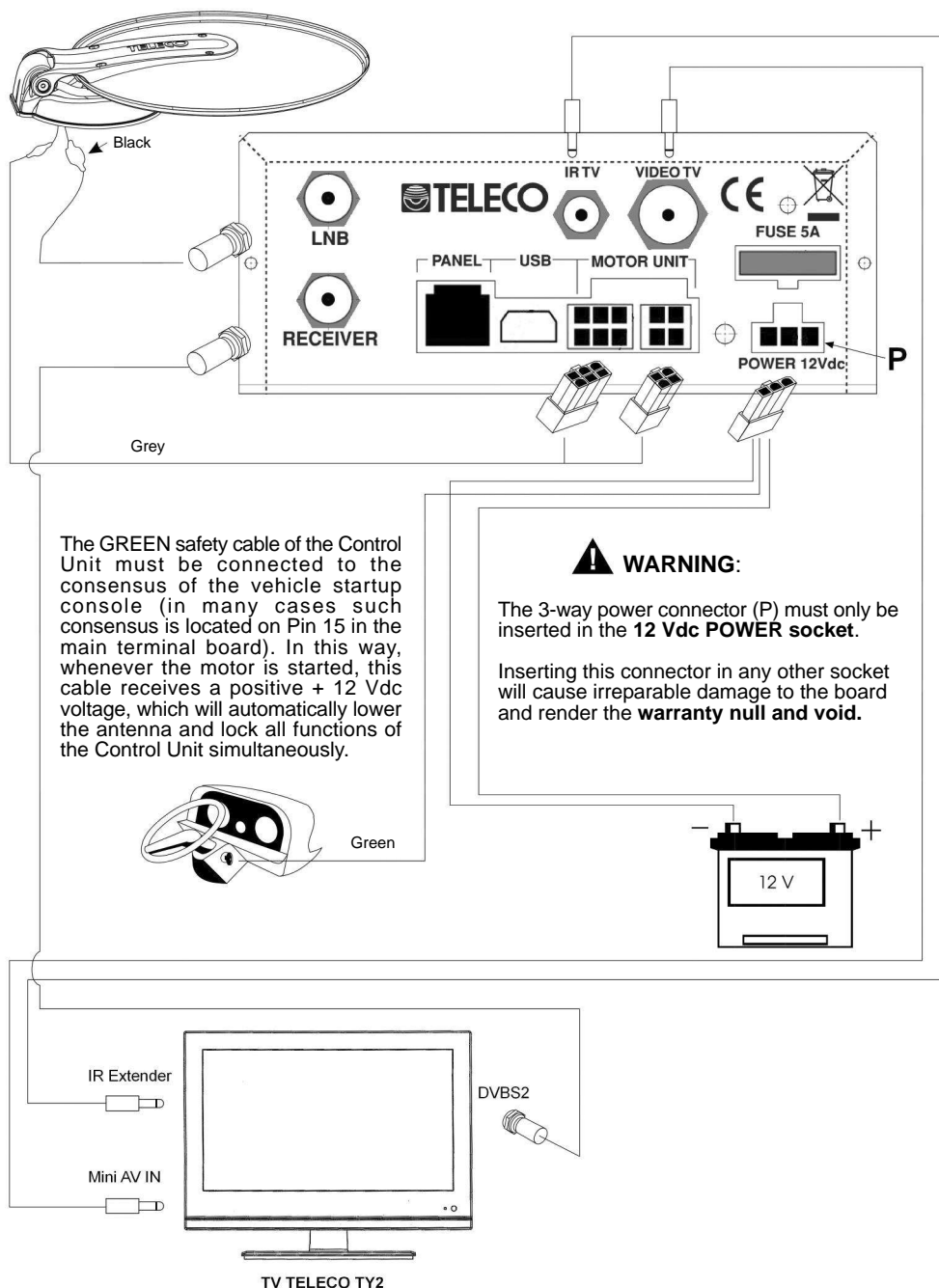
Connection diagrams

- 1) Connect the grey cable (motors) to the MOTOR UNIT connector and the white coaxial cable (antenna) to the LNB connector of the Control Unit.
- 2) Connect the BLACK cable of the Control Unit to the NEGATIVE POLE of the vehicle 12 Volt Battery and the RED cable to the POSITIVE POLE + (remember not to mix the + and - poles up), using 2 cables of 2.5 mm² cross section.
- 3) The GREEN safety cable of the Control Unit must be connected to Pin 15 of the vehicle ignition key cylinder (D+). In this way, whenever the engine is started, this cable receives a positive +12 Vdc voltage, which will automatically lower the antenna and lock all functions of the Control Unit simultaneously.

4) Connecting the Decoder

- a) Use a coax cable to connect the RECEIVER connector of the Control Unit to the DVB-S2 input of the TV.
- b) Use the RCA - Mini AV cable to connect the Video TV connector of the Control Unit to the RCA - Mini AV input of the TV.
- c) Use the jack-jack cable to connect the " IR TV " connector of the Control Unit to the " IR Extender " connector of the TV

Connecting the Kit with Teleco TV TY2





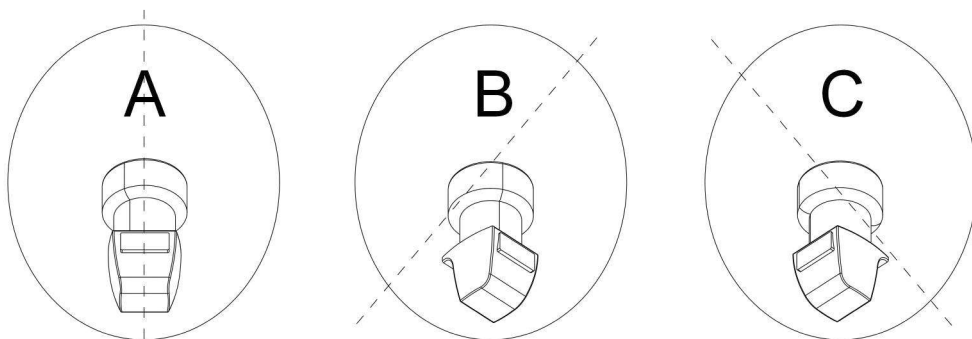
WARNING This technical note is to call the attention of the installation personnel to certain details of Flat Sat Elegance Smart installation. During installation, you must take the following precautions:

The power supply cable must directly come from the battery and must have no junctions. Minimum cross section of the cable is 2,5 mm². For cable lengths equal to or above 6 metres, the minimum cross-section is 4 mm². Only the Flat Sat Elegance Smart must be connected to this cable; all the other devices must be connected to another power supply cable. The cable connecting the driving unit to the Flat Sat Elegance Smart Control Unit must NEVER be cut for any reason whatsoever: should the cable turn out to be too long, wind the extra part into a coil in a free area of the vehicle. Leave a little cable in the driving unit area; should any technical operation be required, it will make it easier to remove the driving unit.

Failure to observe these instructions shall render the Warranty null and void.

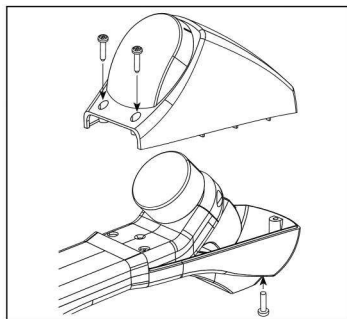
LNB rotation for ideal signal reception in extreme (South-western or South-eastern) areas in Europe

Please be reminded that your outside low-noise block converter (LNB) has its own special mounting position that must be maintained, otherwise you will be unable to receive any signals. The LNB pre-defined installation position is along the dish centre line (Fig. A): in this configuration, the Flat Sat Elegance Smart system will operate correctly in most European countries. If, however, you happen to find yourselves very far from the orbital position of your required satellite, you may want to adjust your low-noise block converter angle. This is especially true if you wish to receive satellite signals from Astra 19E, Astra 28E or HotBird 13E and you are in Portugal or Morocco: you will then have to adjust the LNB angle as shown in fig. B, while if you happen to be in Turkey, to receive signals from the same satellites you will have to adjust your LNB to the position shown in fig. C.

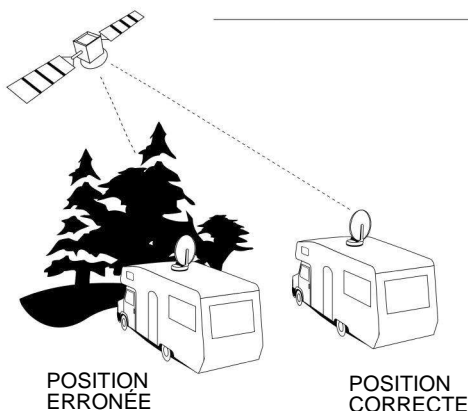
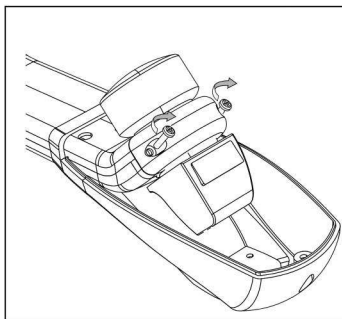


Place	Position	HotBird 13E	Astra 19E	Astra 28E
Lisbona	B	25°	28°	37°
Casablanca	B	27°	34°	41°
Ankara	C	22°	15°	5°

LNB tilt adjustment



- 1) Remove the LNB protective cover by screwing out the 3 screws
- 2) Loosen the screws on the LNB locking U-bolt
- 3) Turn in the Clockwise (West) or Anti-clockwise (South-East) direction
- 4) Lock the LNB again by screwing down the screws
- 5) Close back the LNB protective cover and screw down the 3 screws



Important information for proper antenna tracking

- 1) Before performing antenna tracking operation, make sure you have positioned your vehicle so that the view towards the South (where Satellite signals come from) is free from any nearby obstacle (trees, houses, etc.). This way, the antenna will be free to receive signals coming from the satellite.

2) It is also important to know that satellites do not transmit with the same intensity throughout Europe, so if you are outside the reception area, your Flat Sat Elegance Smart search might be unsuccessful. The reception areas for each Satellite can be found on the main magazines dealing in this line of business. Also remember that the larger the dish, the more reception area is available.

WRONG POSITION



RIGHT POSITION



Tips on the best use of Flat Sat Elegance Smart

When you park your vehicle, make sure that:

- 1) No obstacle (for example trees) is too near your antenna, preventing it from moving freely. No metal or glass wall is very near (about 5 m) the antenna, since this would act as a mirror for satellite signals and could induce the antenna to stop towards it.
 - 2) Remove any snow or ice from the Flat Sat Elegance Smart before actuating it in order to avoid wasting battery power.
 - 3) If you decide to turn the engine of your vehicle on in order to re-charge its batteries, with the safety cable connected to the ignition key, the antenna, if lifted, will come down automatically and it will not be possible to lift it again as long as the engine is running.
 - 4) Make sure that your batteries are always sufficiently charged, since, if the voltage falls below 10 Volts, the Flat Sat Elegance Smart electronic safety circuit will prevent the antenna from rising.
 - 5) Should you use 12 Volt power supply instead of batteries, be careful to use stabilized power supply being able to provide 5 A continuously and at least 10 A for short periods. At all costs, avoid using low quality, non stabilized battery chargers.
 - 6) **It is recommended not to use the antenna under strong wind conditions (80 km/h). Failure to comply with this condition may result in product degradation which the manufacturer cannot be held responsible for.**
 - 7) **Antenna closing operations, whether by user's control or automatically for vehicle start-up, require variable time.
Before starting the vehicle, always make sure that the antenna is fully closed.**
 - 8) **If the vehicle on which the antenna is installed is loaded onto a train or truck, make sure it is loaded in the direction of travel of the train/truck that will be transporting it.
Failure to observe this precaution may cause the dish to lift and damage the antenna and/or vehicle.**
- * **The manufacturer declines any liability for all degradations suffered by the product owing to misuse.**

Flat Sat Elegance Smart

The Flat Sat Elegance Smart is a fully automatic satellite tracking system able to locate satellites that emit both DVB-S and DVB-S2 signals.

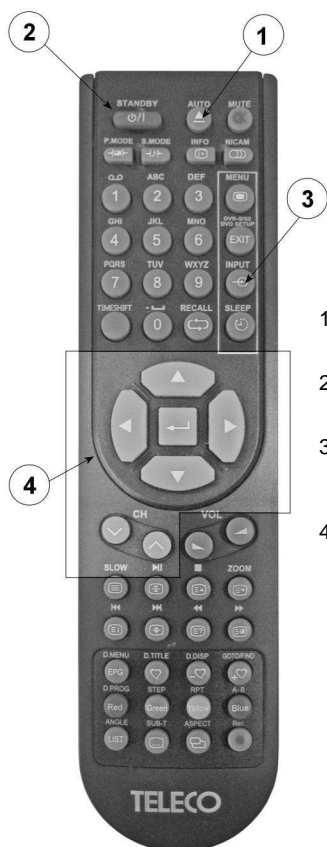
Flat Sat Elegance Smart S features the “Smart” function (filed patent application)

The Smart function

With the “Smart” function all you have to do is choose the TV programme you want to watch and the Flat Sat Elegance Smart will automatically seek out the satellite transmitting it! To use the “Smart” function the Flat Sat Elegance Smart must be associated with a Teleco TY2/19D, TY2/22D, TY2/24 or TY2/32 TV with incorporated satellite receiver.

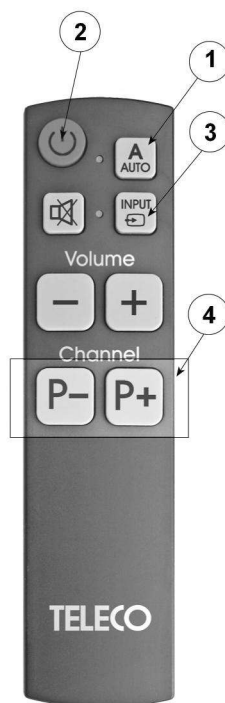
Using the Flat Sat Elegance Smart

The Flat Sat Elegance Smart can be controlled using the complete remote control supplied with the TY2 TV or the simplified 8-key TS8 remote control which can be purchased as an optional.



- 1) Total On/Off: sends the ON/OFF signal to Control Unit and TV.
- 2) TV On/Off: sends the ON/OFF signal to the TV only.
- 3) TV input source selection key: selects the TV input source (DVB-T, DVBS2, Scart, etc.)
- 4) Pressing any of these keys during the satellite search phase returns you to the receiver menu to change channel.

Remote control supplied with the TY2 TV



Simplified 8-key TS8 remote control (Optional)

Switching on the Flat Sat Elegance Smart

To switch on the Flat Sat Elegance Smart system press the AUTO key (1) for about 1 second. The Control Unit and TV will come on and the initialisation process begins.



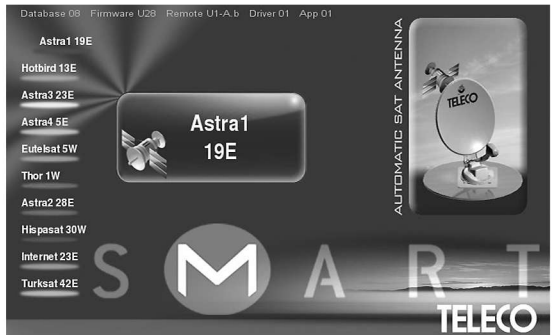
Satellite selection

The Flat Sat Elegance Smart will automatically select the satellite transmitting the programme that has been entered on the receiver incorporated in the TV. A window with an antenna info-graphic shows how tracking is progressing.

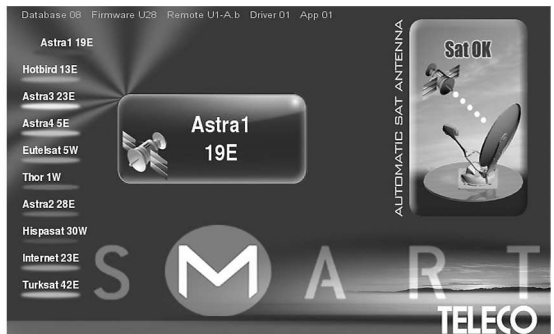
After a few second the antenna will start rotating, indicating that satellite tracking has begun.

Satellite search

During the satellite search, the antenna rotates and the name of the selected satellite is shown in the centre of the screen.



Once the satellite has been found the antenna stops and the words "Sat Ok" appear.



A few seconds later the satellite search menu disappears and the TV automatically displays the channel that was selected on the DVB-S2 satellite receiver incorporated in the TV.



If you change channel on the receiver and choose a TV programme transmitted by a different satellite, the Flat Sat Elegance Smart will immediately start searching for the new satellite.

Note: during the satellite search phase the user can return to the satellite receiver menu simply by pressing one of the keys (4).

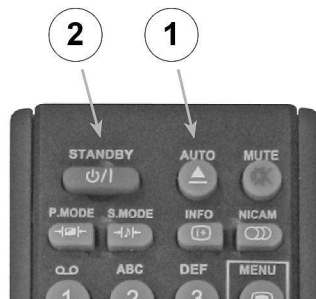
Note: with every search, the antenna automatically saves the coordinates of each tracked satellite in order to speed up the process when switching from one satellite to another or if switching the system back on after parking the antenna. Note that this memory is wiped every time the vehicle engine is started (as long as the green safety cable is connected).

Closing the antenna with shutdown of the Flat Sat Elegance Smart

Once you have stopped watching satellite channels press key (1).
The TV displays the Control Unit menu and an info-graphic showing the antenna being closed.



Once the antenna closure procedure has been completed the message “P OK” appears.
After a few seconds the Control Unit and TV shut down automatically.



To switch the system back on just press the key (1) again.

Safety connection: correct connection of the green safety wire ensures that the antenna is automatically closed and the TV switched off if the vehicle starts moving. Make sure the green cable has been connected as indicated in the installation guide.

Using the TV to watch other sources (terrestrial digital, DVD etc.)

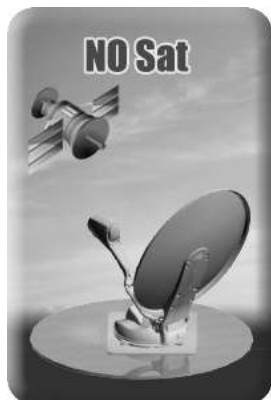
Use the INPUT (3) key on the remote control to select the source you intend to view on the TV. If you decide to go back to watching Satellite channels, select the DVB-S2 source with the INPUT (3) key of the remote control.

Viewing other sources with the antenna closed

Press the key (2) to switch on the TV: use the INPUT key (3) of the remote control to select the source you intend to watch on the TV.

Fault display

Should any faults occur, these are displayed by the antenna animation on the TV screen.



1) Before performing antenna tracking operation, make sure you have positioned your vehicle so that the view towards the South (where Satellite signals come from) is free from any nearby obstacle (trees, houses, etc.). This way, the antenna will be free to receive signals coming from the satellite.

2) It is also important to know that satellites do not transmit with the same intensity throughout Europe, so if you are outside the reception area, your Flat Sat Elegance Smart search might be unsuccessful. The reception areas for each Satellite can be found on the main magazines dealing in this line of business. Also remember that the larger the dish, the more reception area is available.



The raising motor is jammed.

Make sure that no foreign matters hinder regular movement.



The rotation motor is jammed.

Make sure that no foreign matters hinder regular movement.



During the switch-on stage a fault occurred in the driving motor.

Make sure that no foreign matters hinder regular movement.

Troubleshooting for Kit with control unit and TELECO TV TY2

If the control unit does not turn on by pressing the button (1) check the following:

- a) Are the RED and BLACK cables properly connected to the battery? The RED cable must be on the + pole, the BLACK cable on the - pole. Should you have mixed up the cables, first disconnect them, replace the safety fuse on the back of the control unit using a similar one (5 A), then re-connect the RED and BLACK cables properly to the battery.
- b) Is the engine of your vehicle running? Turn it off, since this means the safety system which keeps the antenna down is operating.
- c) Have the connections been properly made? Check the connections in the installation manual.
- d) Are the remote control batteries properly charged?
- e) Is the control unit MIR visible and are you directing the remote control towards the MIR?
- f) Is the TV on?

If the control unit turns on by pressing the button (1) but the TV does not:

- a) Make sure that the TV is part of the Kit and that the connections described in the installation manual have been made properly.
- b) Is the TV on?
If the Flat Sat Elegance Smart has not found the satellite after a complete search, check the following:
 - a) Is the view towards the South free from any obstacle?
 - b) Is the place you are at within the reception area (footprint) of the satellite you have chosen?
 - c) Is the cable connecting the LNB to the antenna firmly fastened? It could have been ripped off or come loose because of contact with an unexpected obstacle.
 - d) Are all the connections on the control unit properly set up? Make sure that the white coax cable coming from the outside powered unit is connected to the LNB connector of the control unit.

If, when the satellite search is over, the TV screen is black, check the following:

- a) Is the RCA-Mini AV cable connected between the Video TV of the control unit and the Mini-AV IN of the TV? Connect it as indicated in the Installation manual.
- b) Is the TV off? Turn it on by pressing the button (2) on the remote control,

If, when the satellite search is over, the message “No Signal” is displayed on the TV screen or if the TV screen is jammed, check the following:

- a) Have you connected the RECEIVER output of the control unit to the DVB-S2 input of the TV via a coax cable? Connect it as indicated in the installation manual.

Technical specifications

SPECIFICATIONS

Search system	Fully automatic, NID recognition according to the DVB-SI EN 300 468 specifications with DVBS2 tuner.
Satellites which can be set	10
Extensions	USB 1.0 Port

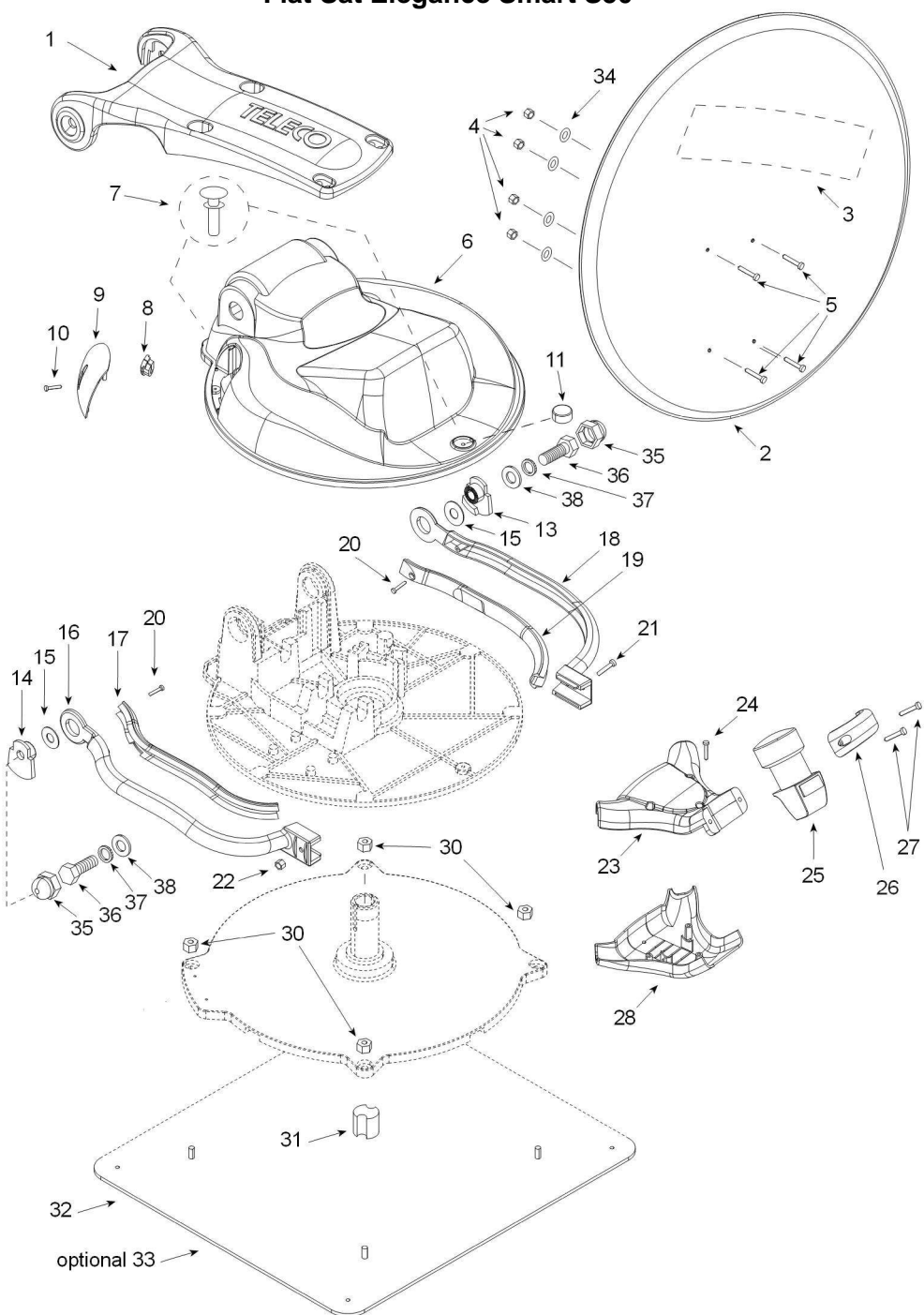
MISCELLANEA

Power Supply	12Vdc (10 - 15 Vdc)
Absorbed current	5 A max.
Current in stand-by	< 10 mA
Fuse	5 A
Dimensions	160 x 187 x 58 mm (Control Unit)

Weight

Control Box:	~1 kg
external driving unit:	Flat Sat Elegance Smart 50: ~8,8 kg
	Flat Sat Elegance Smart 65: ~9,0 kg
	Flat Sat Elegance Smart 85: ~10,8 kg

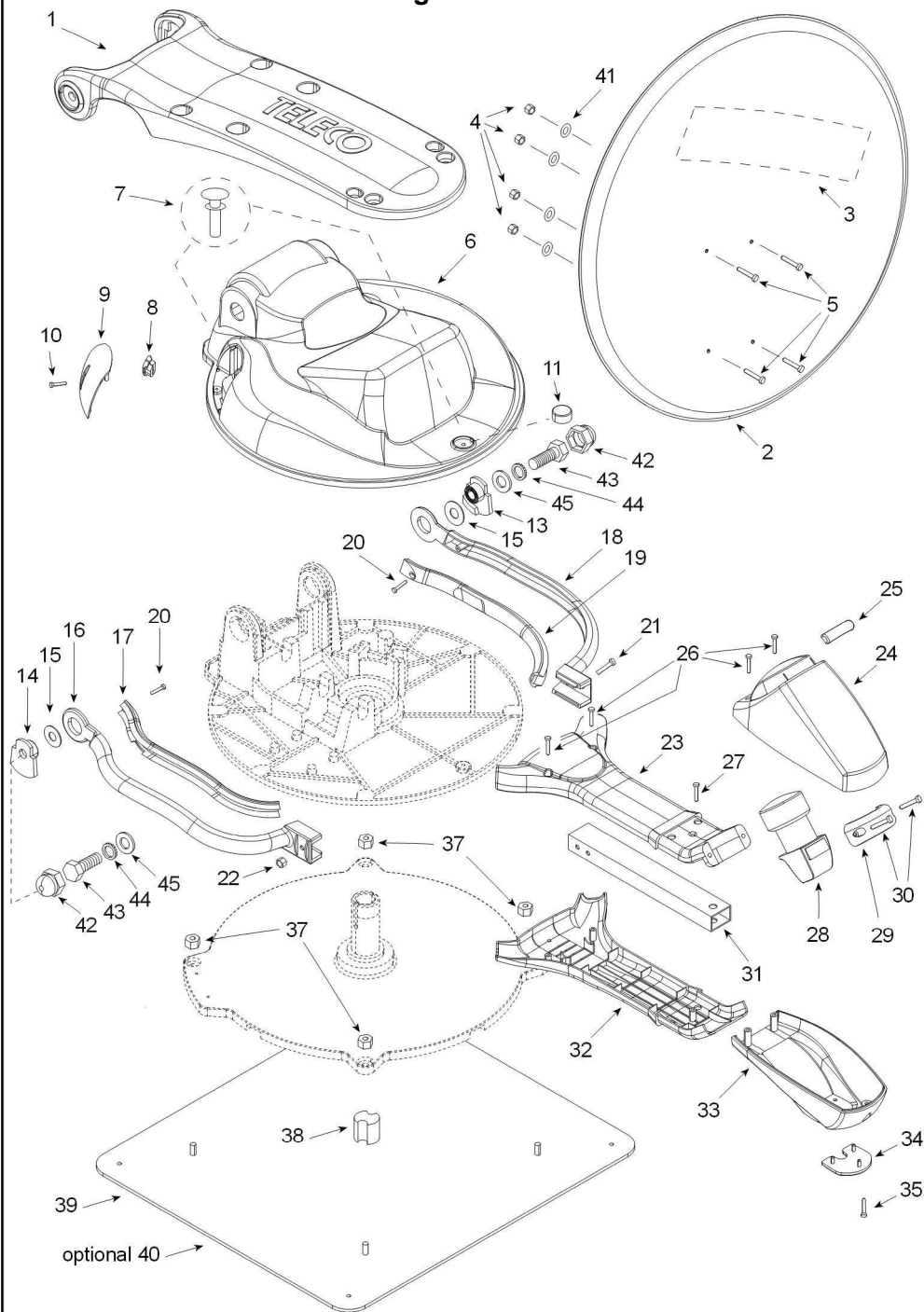
Flat Sat Elegance Smart S50



Flat Sat Elegance Smart 50 (28/04/2016))

Pos	Code	Q.ta	Description
1	11491	N.1	Dish support mast
2	06681	N.1	Parabolic antenna D=49x45.5 cm
3	15903	1	Flat Sat Elegance Smart Dish sticker
4	03685	N.4	Self-locking nut M5
5	10425	N.4	Screw M5X10
6	10533	N.1	External unit cover
7	10442	N.2	Self-locking rivet SR-5105-W
8	11008	N.1	Hole grommet
9	10534	N.1	External unit cover door
10	10384	N.1	Self-tapping screw M2.9x9.5
11	11009	N.1	LNB rubber support
13	10543	N.1	LNB mast right-hand insert
14	10544	N.1	LNB mast left-hand insert
15	13316	N.2	Flat washer D22x30x0,5
16	10902	N.1	LNB left-hand mast
17	10542	N.1	LNB mast left-hand cable cover
18	10903	N.1	LNB right-hand mast
19	10541	N.1	LNB mast right-hand cable cover
20	10781	N.2	Self-tapping screw M2.9x9.5
21	03682	N.1	Screw M5x40
22	09015	N.1	Nut M5
23	10536	N.1	LNB tube cover top
24	10782	N.2	Self-tapping screw M3.9x25
25	16992	N.1	LNB Stark ST1
26	10283	N.1	LNB stop U-bolt
27	11087	N.2	Screw M4x16
28	10535	N.1	LNB tube cover bottom
30	03684	N.4	Self-locking nut M6
31	11162	N.1	Plastic cable-locking split pin
32	10693	N.1	Base fixing 45x40 plate
33	10395	N.1	Base fixing 60x60 plate
34	15616	N.4	Flat washer D5
35	10490	N.2	Black plastic nut cover M10
36	10779	N.2	Screw M10x35
37	10778	N.2	Toothed washer D=10
38	10777	N.2	Flat washer D=10

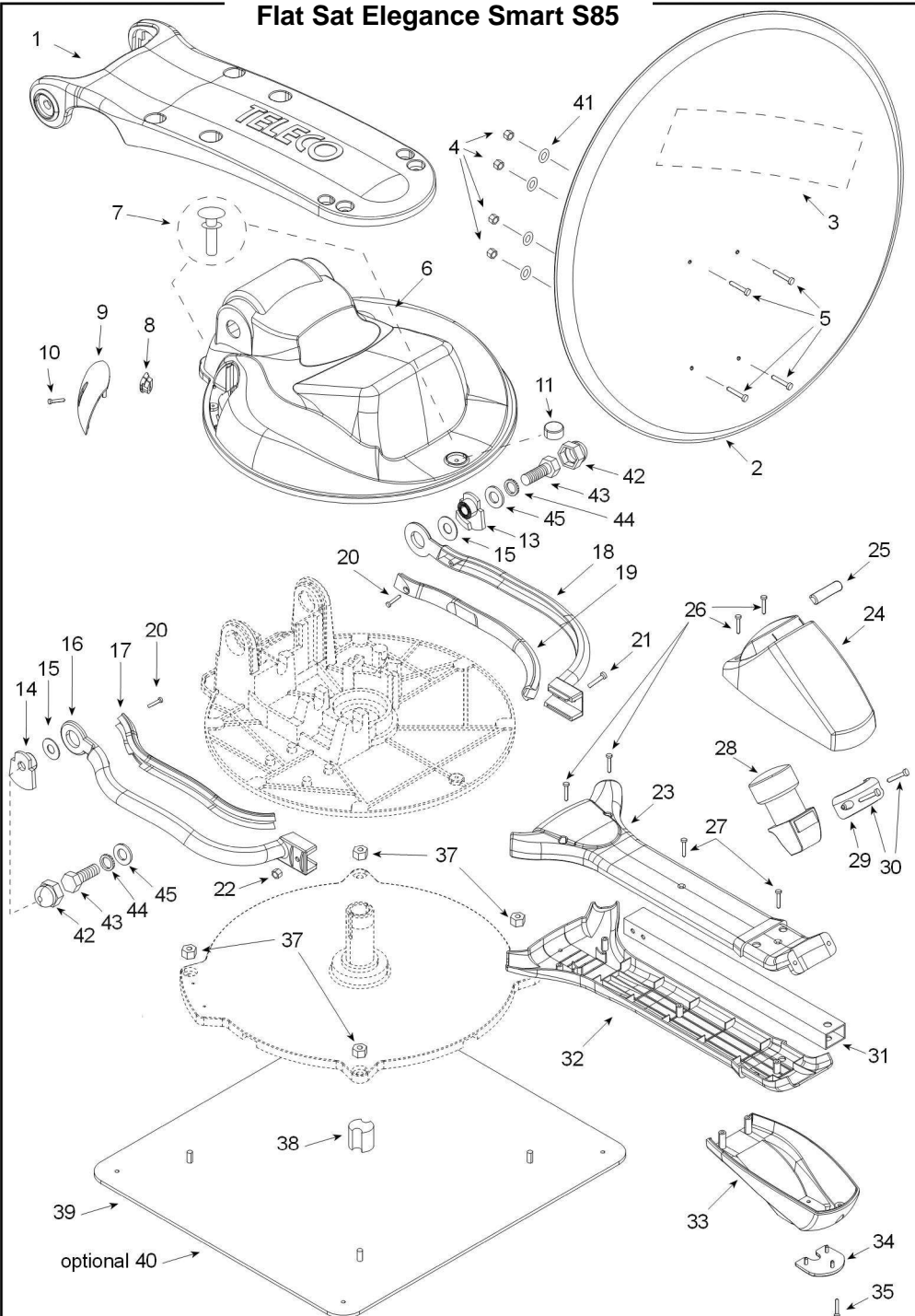
Flat Sat Elegance Smart S65



Flat Sat Elegance Smart S65

Pos	Code	Q.ta	Description
1	11440	N.1	Dish support mast
2	03676	N.1	Parabolic antenna D=72x67 cm
3	17106	1	Flat Sat Elegance Smart Dish sticker
4	03684	N.4	Self-locking nut M6
5	10910	N.4	Screw M6X12
6	10533	N.1	External unit cover
7	10442	N.2	Self-locking rivet SR-5105-W
8	11008	N.1	Hole grommet
9	10534	N.1	External unit cover door
10	10384	N.1	Self-tapping screw M2.9x9.5
11	11195	N.1	LNB rubber support
13	10543	N.1	LNB mast right-hand insert
14	10544	N.1	LNB mast left-hand insert
15	13316	N.2	Flat washer D22x30x0,5
16	10902	N.1	LNB left-hand mast
17	10542	N.1	LNB mast left-hand cable cover
18	10903	N.1	LNB right-hand mast
19	10541	N.1	LNB mast right-hand cable cover
20	10781	N.2	Self-tapping screw M2.9x9.5
21	03682	N.1	Screw M5x40
22	09015	N.1	Nut M5
23	10538	N.1	LNB tube cover top
24	10548	N.1	LNB box top
25	11010	N.1	Rubber support for LNB box top
26	10782	N.4	Self-tapping screw M3.9x25
27	10408	N.1	Self-tapping screw M3.9x22
28	16992	N.1	LNB Stark ST1
29	10283	N.1	LNB stop U-bolt
30	11087	N.2	Screw M4x16
31	10842	N.1	LNB holder tube
32	10537	N.1	LNB tube cover bottom
33	10547	N.1	LNB box bottom
34	11011	N.1	Rubber support for LNB box bottom
35	10783	N.1	Self-tapping screw M3.9x13
37	03684	N.4	Self-locking nut M6
38	11162	N.1	Plastic cable-locking split pin
39	10693	N.1	Base fixing 45x40 plate
40	10395	N.1	Base fixing 60x60 plate
41	15617	N.4	Flat washer D6
42	10490	N.2	Black plastic nut cover M10
43	10779	N.2	Screw M10x35
44	10778	N.2	Toothed washer D=10
45	10777	N.2	Flat washer D=10

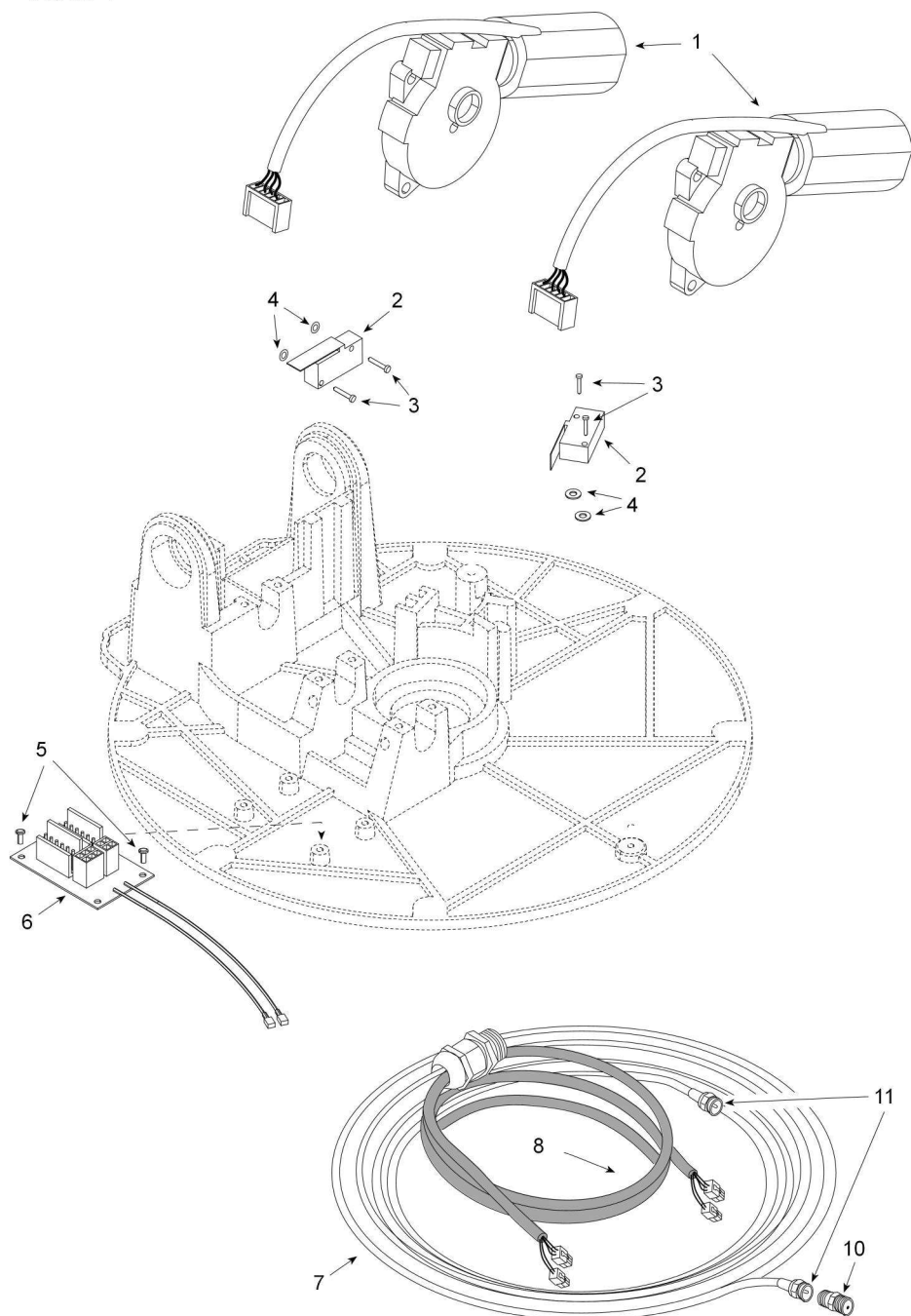
Flat Sat Elegance Smart S85



Flat Sat Elegance Smart S85

Pos	Code	Q.ta	Description
1	11440	N.1	Dish support mast
2	07364	N.1	Parabolic antenna D=91x85 cm
3	17106	1	Flat Sat Elegance Smart Dish sticker
4	03684	N.4	Self-locking nut M6
5	10910	N.4	Screw M6X12
6	10533	N.1	External unit cover
7	10442	N.2	Self-locking rivet SR-5105-W
8	11008	N.1	Hole grommet
9	10534	N.1	External unit cover door
10	10384	N.1	Self-tapping screw M2.9x9.5
11	11195	N.1	LNB rubber support
13	10531	N.1	LNB mast right-hand insert
14	10532	N.1	LNB mast left-hand insert
15	13316	N.2	Flat washer D22x30x0,5
16	10902	N.1	LNB left-hand mast
17	10542	N.1	LNB mast left-hand cable cover
18	10903	N.1	LNB right-hand mast
19	10541	N.1	LNB mast right-hand cable cover
20	10781	N.2	Self-tapping screw M2.9x9.5
21	03682	N.1	Screw M5x40
22	09015	N.1	Nut M5
23	10540	N.1	LNB tube cover top
24	10548	N.1	LNB box top
25	11010	N.1	Rubber support for LNB box top
26	10782	N.4	Self-tapping screw M3.9x25
27	10408	N.2	Self-tapping screw M3.9x22
28	16992	N.1	LNB Stark ST1
29	10283	N.1	LNB stop U-bolt
30	11087	N.2	Screw M4x16
31	10843	N.1	LNB holder tube
32	10539	N.1	LNB tube cover bottom
33	10547	N.1	LNB box bottom
34	11011	N.1	Rubber support for LNB box bottom
35	10783	N.1	Self-tapping screw M3.9x13
37	03684	N.4	Self-locking nut M6
38	11162	N.1	Plastic cable-locking split pin
39	10693	N.1	Base fixing 45x40 plate
40	10395	N.1	Base fixing 60x60 plate
41	15617	N.4	Flat washer D6
42	10490	N.2	Black plastic nut cover M10
43	10779	N.2	Screw M10x35
44	10778	N.2	Toothed washer D=10
45	10777	N.2	Flat washer D=10

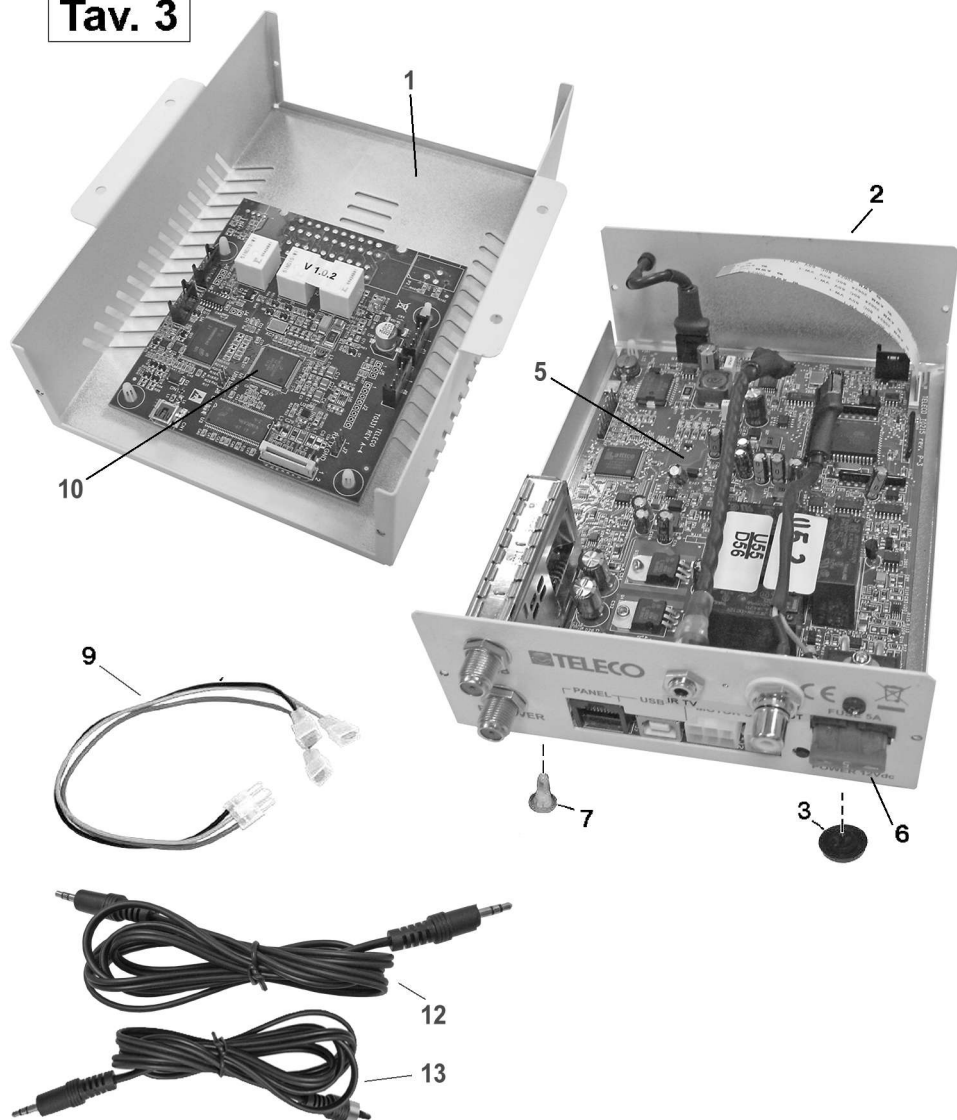
Tav.2



Tav 2

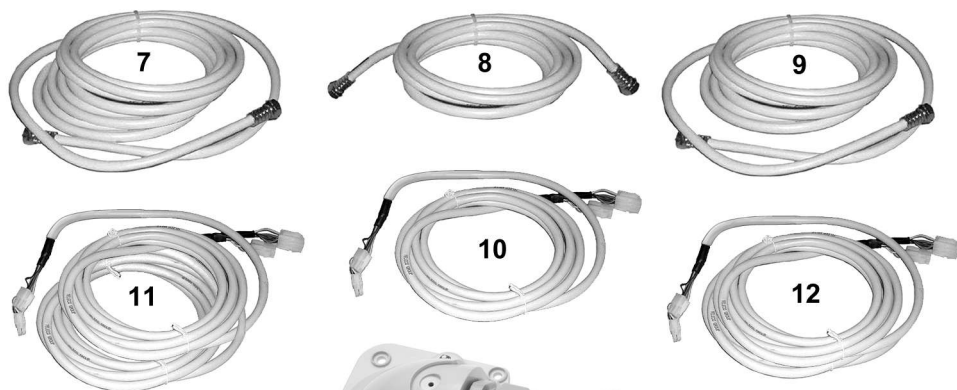
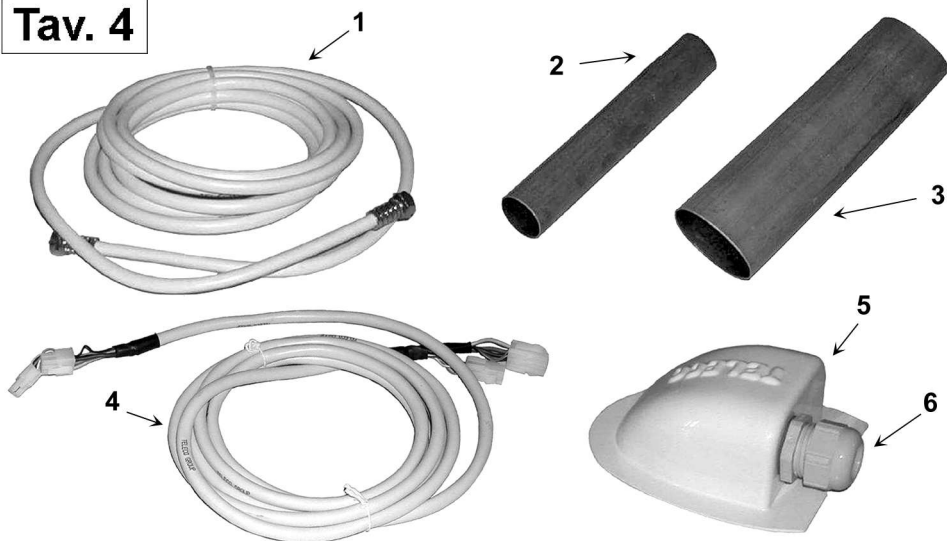
Pos	Code	Q.ta	Description (27/04/2017)
1	11161	N.2	Electric motor
2	04761	N.2	Waterproof microswitch
3	05086	N.4	Screw M3x20
4	06817	N.4	Flat washer D=3
5	11088	N.2	Screw M4x8
6	12945	N.1	Connector strip
7	05807	MT.3,6	Coax cable RG 58
8	12294	N.1	10-pole 2.5 m Motor cable + PG21 x 2 cables
10	03280	N.1	FF13 double female jack
11	15077	N.2	F50 F connector

Tav. 3

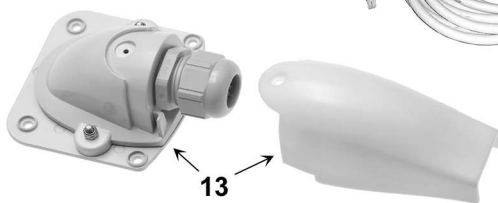


Pos	Code	Q.ta	Description
1	15922	1	Control unit lid
2	15923	1	Control unit bottom
3	09835	N.4	Black rubber foot
4	16414	N.1	T0215 KOMFORT/ELEGANCE SMART board
5	09705	N.1	5A Fuse
6	01458	N.8	Support
7	09318	N.1	Power supply cable
8	15921	1	T0331 board Smart
9	13764	N.1	Cable Jack-Jack 2.0 m long
10	14707	N.1	RCA-Mini AV cable, 2.0 m long
11			
12			
13			

Tav. 4



OPTIONAL



Pos	Code	Q.ta	Description
1	05950	N.1	3 m coax cable F/F.connector
2	03598	N.1	Shrink-wrap sheath
3	03597	N.1	Shrink-wrap sheath
4	09300	N.1	10-core 3 m engine unit cont. cable w/connector
5	10969	N.1	White abs cable cover
6	13190	N.1	PG21 complete with gasket for 2 cables
7	07883	N.1	Coax cable extension - 9 m with F/F.connector
8	08998	N.1	Coax cable extension - 2 m with F/F.connector
9	07294	N.1	Coax cable extension - 5 m with F/F.connector
10	09765	N.1	1 Engine connect 4+6 pole cable extension - 2 m with connect.
11	09302	N.1	Engine connect 4+6 pole cable extension - 9 m with connect.
12	09301	N.1	Engine connect 4+6 pole cable extension - 5 m with connect.
13	11109	N.1	professional aluminium fairlead complete with PG 21 with gasket for 2 cables



CONFORMITY CERTIFICATE

The manufacturer Teleco Spa

Via Majorana nr. 49, 48022 Lugo (RA)
Declares under its own responsibility that the following products:

Flat Sat Elegance Smart 50 - Flat Sat Elegance Smart 65
Flat Sat Elegance Smart 85

which are the subject of this certificate, conform to the following norms:

EN 60065: 2002
EN 55013: 2001 + A1: 2003
EN 61000 – 3 - 2: 2000 + A2: 2005
EN 61000 – 3 – 3: 1995 + A1: 2001 + A2: 2005
EN 55020: 2002 + A2: 2005

according to the terms of the European directive 2006/95/EC
Low Voltage (modified by 93/68/CEE) and
2004/108/CEE of Electromagnetic Compatibility
(modified by 92/31/CEE e 93/68/CEE) of the European Parliament.

Lugo 01 / 08 / 2017

THE PRESIDENT

Ing. Raul Fabbri

Installed Kit



**Group
TELECO**



ITALY

Via E. Majorana 49
48022 LUGO (RA)
Tel. + 39 0545 25037
Fax. + 39 0545 32064
mail: info@telecogroup.com
www.telecogroup.com
Assistenza 899 899 856



DEUTSCHLAND

82041 Deisenhofen
Tel. 08031 98939
Fax 08031 98949
telecogmbh@telecogroup.com
www.telecogroup.com



FRANCE

3, Impasse des Iles
ZA La Maladière
07300 St Jean de Muzols
mail: contact@telecogroup.fr
www.telecogroup.fr



ITALY

Via E. Majorana 49
48022 LUGO (RA)
Tel. + 39 0545 25037
Fax. + 39 0545 32064
mail: telair@telecogroup.com
www.telecogroup.com

IN EUROPE:

GREAT BRITAIN - SCAN TERIEUR LTD
30, The Metro Centre, Tolpits Lane - Watford,
Herts - England - WD18 9XG
Tel. 01923 800353 - Fax 01923 220358
e-mail: info@scan-terieur.com
www.scan-terieur.com

THE NETHERLANDS/BELGIUM/LUXEMBOURG/DENMARK/SWEDEN
KARMAN TRADING
Tel. +31 (0) 341 722450 - Fax +31 (0) 341 722451
e-mail: info@karmanttrading.eu
www.karmanttrading.eu

FRANCE - TELECO SAS
3, impasse des Iles - ZA La Maladière
07300 St Jean de Muzols - France
Tél. 04 75 08 49 17 - Fax 09 70 32 83 00
contact@telecogroup.fr
www.telecogroup.fr

SERVICE COMMERCIAL :
Jean-Philippe Bleys
Tél. 02 48 58 03 67 Fax 02 48 58 35 85
teleco.telair@bleysetd.com

Service Technique :
Tél. 06 83 31 44 05 ou 04 75 08 28 25
www.techmobilefrance.com

ESPAÑA - ADD SICMAP S.L.
EVA Caravan - Via Sergia 92 - Pol. Ind. Pla d'en Boet II
08302 MATARO (Barcelona)
Tel. 93 790 35 26 - Fax. 93 796 21 17
info@addsicmap.com
Servicio técnico: Fills de Rocha i Lopez, S.L. - C/Goya,4
08903 L'Hospitalet de Llogrebat - Barcelona - España
Tel. 933 333 753 - Fax 933 337 236
fillsrocha@fillsrocha.com

ÖSTERREICH - TELECO GmbH
82041 Deisenhofen - Deutschland
Tel. 0049 8031 98939 - Fax. 0049 8031 98949
telecogmbh@telecogroup.com
www.telecogroup.com
SERVICE 0900 94 94 70

DEUTSCHLAND - TELECO GmbH
82041 Deisenhofen - Deutschland
Tel. 08031 98939 - Fax 08031 98949
telecogmbh@telecogroup.com
www.telecogroup.com
Vertretung:
ZIMMER
Ziegenhainer Str. 7 - 34626 Neukirchen
Tel. 06694-9108000 - Fax 06694-9108008
info@zimmer-mobiltechnik.de
www.zimmer-mobiltechnik.de
SERVICE 08921129997



Kundendienst beim
ausgewählten
Bosch Service!



[www.facebook.com/pages/
Telcogroup/213241202111442](https://www.facebook.com/pages/Telcogroup/213241202111442)

Foto e disegni non contrattuali - Les photos et les dessins ne sont donnés qu'à titre
indicatif - We reserve the right to make technical changes without prior notice -
Fotos und Zeichnungen nicht vertraglich - Foto's en tekeningen niet contractueel -
Fotos y planos no indicados en contrato